



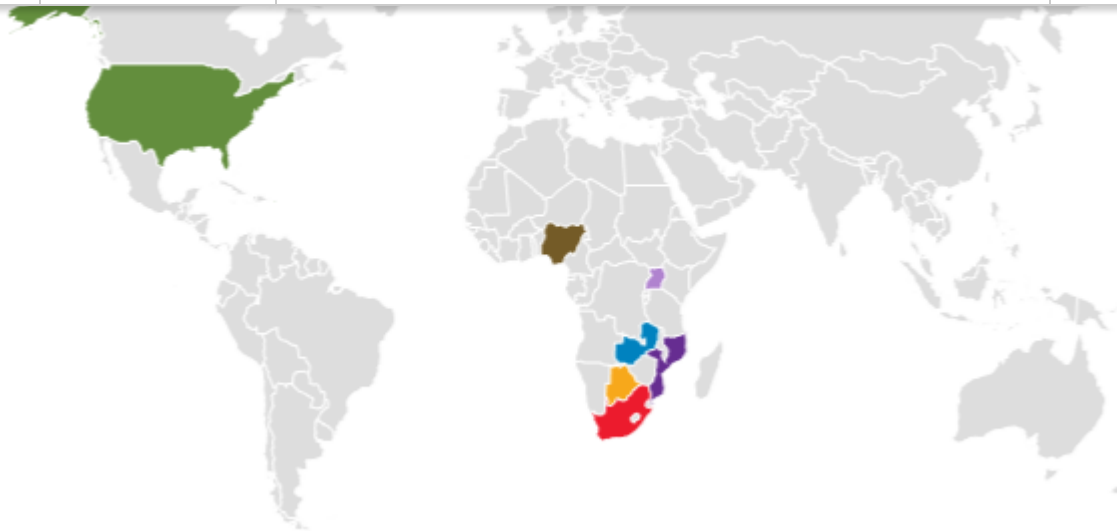
HLB-SIMPLE

Volume 3 issue 2

Below are your HLB-SIMPLE weekly meeting and event reminders.

Weekly Newsletter





Top Stories in this issue:

- Upcoming HLB-SIMPLe Meetings
- Announcements
- Funding Opportunities
- Recent Publications
- Resources
- Job Opportunities

Upcoming HLB-SIMPLe Meetings

23
JAN

RCC Weekly Meeting

📅 Monday, January 23, 2023

🕒 Time: 11:00 AM – 12:00 PM

🌐 Location: Zoom Meeting (invitation only)

Time zone: CT

For more information, please contact Ken Schechtman at kschechtman@wustl.edu, Treva

Announcements

NEW *Free open access publishing in Nature journals for researchers from LMICs*

SPRINGER NATURE Springer Nature announced that primary research from authors from World Bank-classified low- and middle-income countries (LMICs) accepted for publication in either Nature or one of the Nature research journals can now be published open access at no cost.

Nature announces support for authors from over 70 countries to publish open access. [Read more.](#)

NEW *Fully-Funded scholarships for African students to do MSc degrees at Oxford*



400 fully-funded scholarships on Oxford MSc courses over the next 8 years have been created for healthcare students from Africa, specifically around building resilience and pandemic preparedness. Our [MSc in Translational Health Sciences](#) is one option they can apply for. Deadline is **20th January**. These are highly competitive degree programmes. [Read more.](#)

NEW *Cardiovascular Disease & Hematology Track (RADIANCE) Training program*



Dr. Victor Davila-Roman, MPI PRIDE CVD-CGE, has received an R25 from NHLBI for a new summer training program.

RADIANCE (SummeR reseArch DIversity ProgrAm iNCardiovascular Disease & Hematology) will be targeting Underrepresented Minority Undergraduate and Professional health-related (ie, medicine, nursing, pharmacy, etc) students. This is an 8-week program for up to 12 students/summer.

Participants receive a stipend, travel to and from St. Louis and lodging while

Data Science for Health Discovery and Innovation in Africa (DS-I Africa)



The Data Science for Health Discovery and Innovation in Africa (DS-I Africa) Initiative aims to leverage data science technologies to transform biomedical and behavioral research and develop solutions that would lead to improved health for individuals and populations. [Read more.](#)

BMC Global and Public Health Journal



We are pleased to announce that the newly launched journal *BMC Global and Public Health*, which publishes important advances and influential research and opinion in all areas of global and public health is now open for submissions. [Read more](#)

NIH Request Information on Simplifying Review Criteria



The NIH has issued a request for information (RFI) seeking feedback on revising and simplifying the peer review framework for research project grant applications. The RFI will be open for a 90-day period, until March 10, 2023 [Read more.](#)

Protection of human subjects



Per NIH policy, [human subjects protection training](#) is required every three years for all key personnel who are involved in the design or conduct of NIH-funded human subjects research. To satisfy this requirement, only good clinical practice (GCP) is acceptable (<https://grants.nih.gov/policy/clinical-trials/good-clinical-training.htm>). CITI certificate is only acceptable if it specifically says it is for GCP training (CITI offers many different courses). Online training is available in a variety of languages, free of charge, through several organizations, including but not limited to the following online courses: Global Health Training Centre (<https://globalhealthtrainingcentre.tghn.org/ich-good-clinical-practice/>); Training and Resources in Research Ethics Evaluation (<https://elearning.trree.org/>). The RCC and NIH do not require or endorse any specific training program.

The NEW policy applies to ALL research grants submitted after 25 JAN 2023, while the old (current) policy only applied to applications over \$500K. What does this policy mean for you and key factors to consider when sharing data, coming January 25, 2023. [Read More](#)

NHLBI Adverse Event (AE) and Unanticipated Problem (UP) Reporting Policy

This policy applies to all human subjects research funded in whole or in part by NHLBI extramural programs. This guideline outlines definitions and policies and procedures for reporting. [Read more](#)

2022 HLB-SIMPLe Annual Meeting Archives



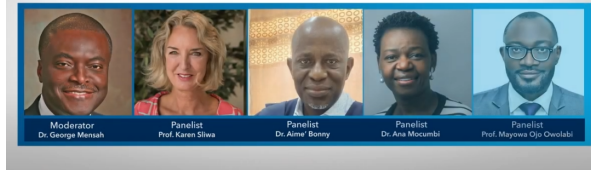
The agenda and presentation materials for the March 2021 and the February 2022 virtual Annual Meetings can be located at the following SamePage location. Please let the [RCC](#) know if you have any trouble accessing these materials. [Read more.](#)

Global Burden of Cardiovascular Disease - Examining Trends in Africa



The fourth webinar in this series provides an in-depth look at cardiovascular disease trends in Africa.

Featured panelists:



Click on the image above to watch the webinar

Join George A. Mensah, MD; Mayowa Ojo OWOLABI, MD, MBBS, MSc; Aime' Bonny, MD; Professor Karen Sliwa, MD, PhD, FACC; and Ana Mocumbi, MD, PhD, for a thought-provoking discussion.

In this video, moderator George A. Mensah, MD and expert panelists provide analysis on:

- The most prevalent modifiable risk factors identified in the African region
- Specific environmental and genetic risk factors affecting CVD rates in the African region
- Generational trends in CVD rates
- The implications for the region on health system development, as well as national and regional policy
- Ways clinicians can address modifiable risks with patients

Funding Opportunities

RCC is keeping a comprehensive list of current Funding Opportunities on the hlb-simple.com web site. click the button below to visit

Funding opportunities

Recent Publications

New articles:

- [The Global Burden of Cardiovascular Diseases and Risk: A Compass for](#)

- [Global Burden of Cardiovascular Diseases and Risks Collaboration, 1990-2021](#) (JACC, 2022, 80:25)

M Lindstrom, N DeCleene, H Dorsey, V Fuster, CO Johnson, KE LeGrand, GA Mensah, C Razo, Benjamin Stark, JV Turco, GA Roth

Please contact the RCC and see our Zotero collection if you have trouble accessing these articles

RCC is compiling a comprehensive list of recent HLB-SIMPLe publications on the hlb-simple.com web site. click the button below to visit

Recent Publications

Resources

[Fogarty International Center \(FIC\)](#)

[Repository of Implementation Frameworks, Measures, and Instruments](#)

Job Opportunities

[Job Opportunities at NIH/NIDDK](#)

[Job Opportunities at NIH](#)

[Post-doctoral research fellow in biostatistics](#)

VISIT HLB-SIMPLe (hlbsimple.org) WEB SITE FOR MORE INFO

Copyright © 2023 WUSTL, All rights reserved.

Want to change how you receive these emails?
You can update your preferences or unsubscribe from this list.

Grow your business with  **mailchimp**